



Northpointe Suite Application Architecture Introduction

For Additional Support:

Northpointe Institute for Public Management

T: 231.938.5959

F: 231.938.5995

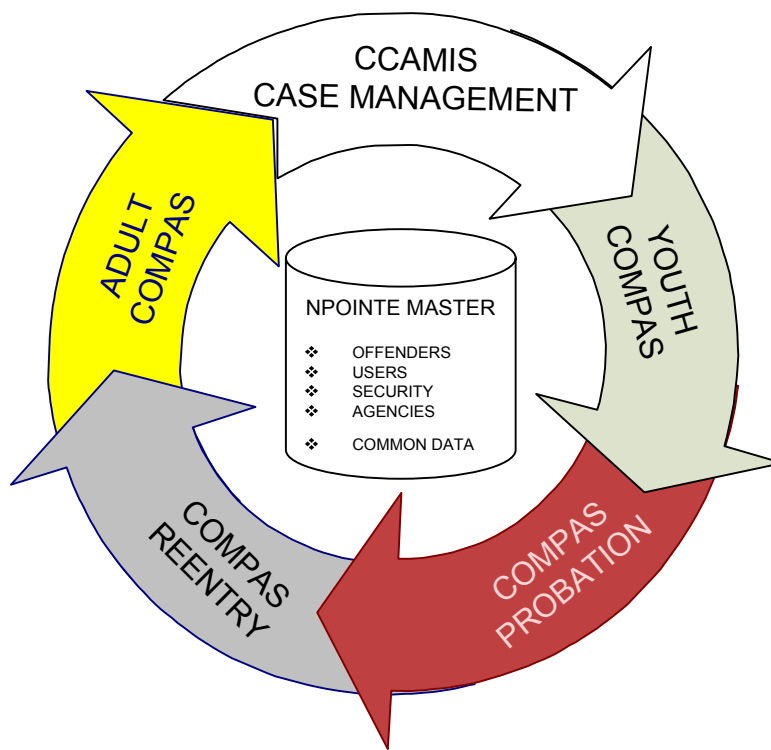
www.npipm.com

support@npipm.com

Northpointe Suite - Introduction

The Northpointe Software Suite was developed to reduce data redundancy while increasing productivity thru information sharing. The Northpointe Suite was designed to hold all the common data in a centralized location to be used by all Northpointe software products. This approach allows each product to leverage specific business rules while eliminating redundant data entry.

Northpointe has also included a set of Services Oriented Architecture “SOA” services designed to ease the interface process between internal software applications.



The Northpointe suite architecture was developed using an N-Tier, Object Oriented (OO) and Service Oriented Architecture (SOA) methodologies.

1. Data Layer

Common centric data such as Offender, User, Security, Agency information is stored in the NPOINTE MASTER database. Specific information geared towards each product is stored in a separate application database. This would include Adult COMPAS, COMPAS Reentry, COMPAS Probation, Youth COMPAS and CCAMIS Case Management.

2. Business Layer

Product business rules are contained in separate business objects. All business objects inherit the rules, methods, properties etc of the NPOINTEBIZ object. This object is a direct relational mapping to the NPointeMaster database. Furthermore, when needed, each business object has the opportunity to be shared with one another. This technique makes it simple for each individual product data and business rules to be shared with each other.

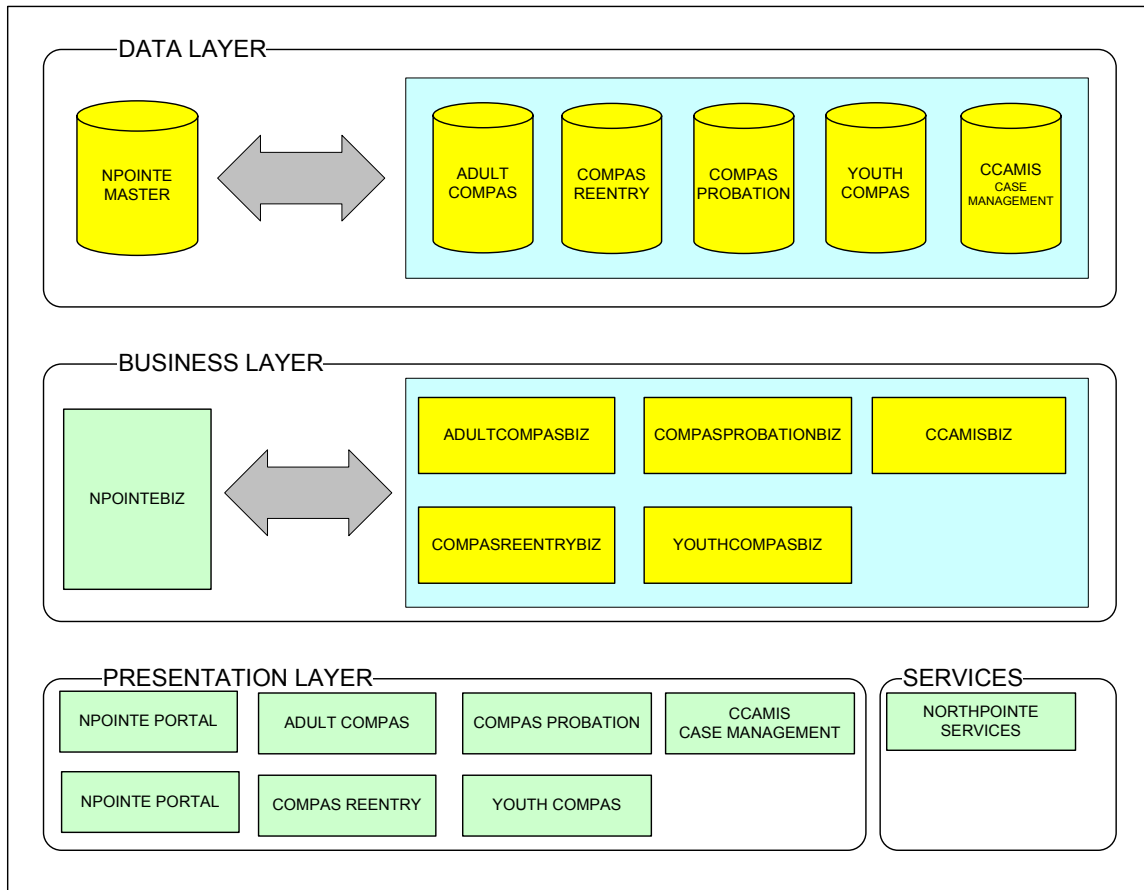
3. Presentation Layer

All of the Northpointe Suite products maintain a common look and feel for all elements of the software. As a user moves from one product to another, each and every module (page) will have a consistent interface as the rest of the suite products.

4. Services Layer

To fulfill complex integration and interfacing needs, Northpointe has developed a set of SOA services to meet these demands. Using SOAP 1.2 protocols, the product suite contains several web services that will meet integration needs. Because of the unique issues that may arise during an interface into your system, we can also provide customized web services to fit your needs. Please contact Northpointe for specific integration information.

Northpointe Suite – Architecture Overview



Hosting Requirements

- ❖ Windows 2000/2003 Server
- ❖ Internet Information Services (IIS) 5.1+
- ❖ SQL Server 2000/2005
- ❖ .Net Framework 2.0 w/SP1
- ❖ ASP.NET AJAX Toolkit for .Net Framework 2.0

Client Requirements

- ❖ Adobe Reader 7.0+
- ❖ Internet Explorer 6.0+
- ❖ Internet/Intranet connection to hosting server

Database (MDF File) Sizes for New Install

- ❖ NPointeMaster : 14 MB
- ❖ COMPAS ReEntry : 6 MB
- ❖ Adult COMPAS : 6 MB
- ❖ COMPAS Probation : 6 MB

Database (MDF File) Sizes for Install with 50,000 Offenders

- ❖ NPointeMaster : 20 MB
- ❖ COMPAS ReEntry : 21 MB
- ❖ Adult COMPAS : 21 MB
- ❖ COMPAS Probation : 22 MB

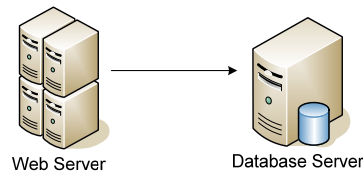
Web Application Size

- ❖ 25 MB

Setup

For optimal performance, Northpointe recommends the following server environment:

- ❖ Web applications should be installed on a dedicated web server.
- ❖ Suite databases should be installed to a dedicated database server.
- ❖ Offsite SQL database backups generated every 2-3 hours

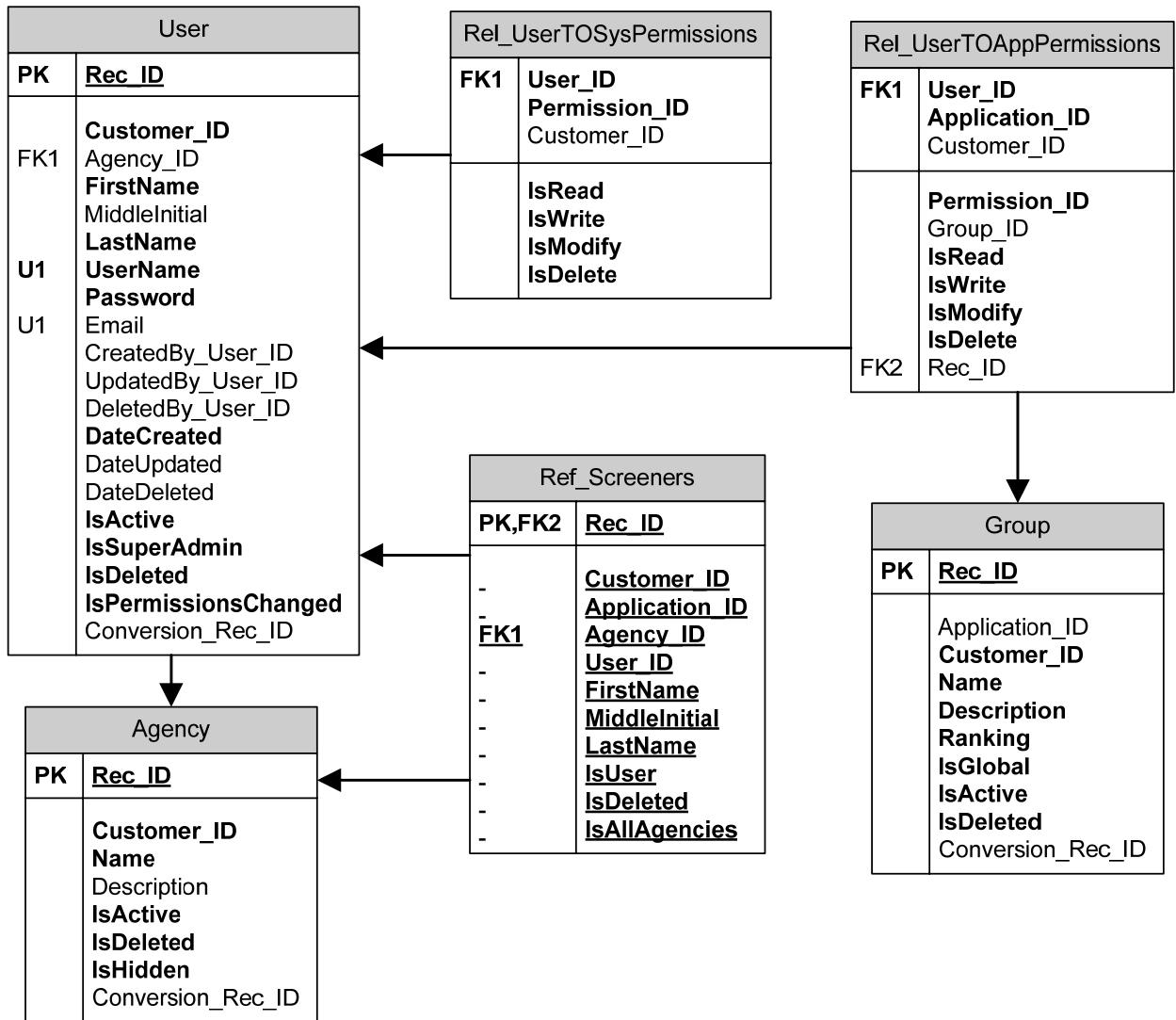


Hardware

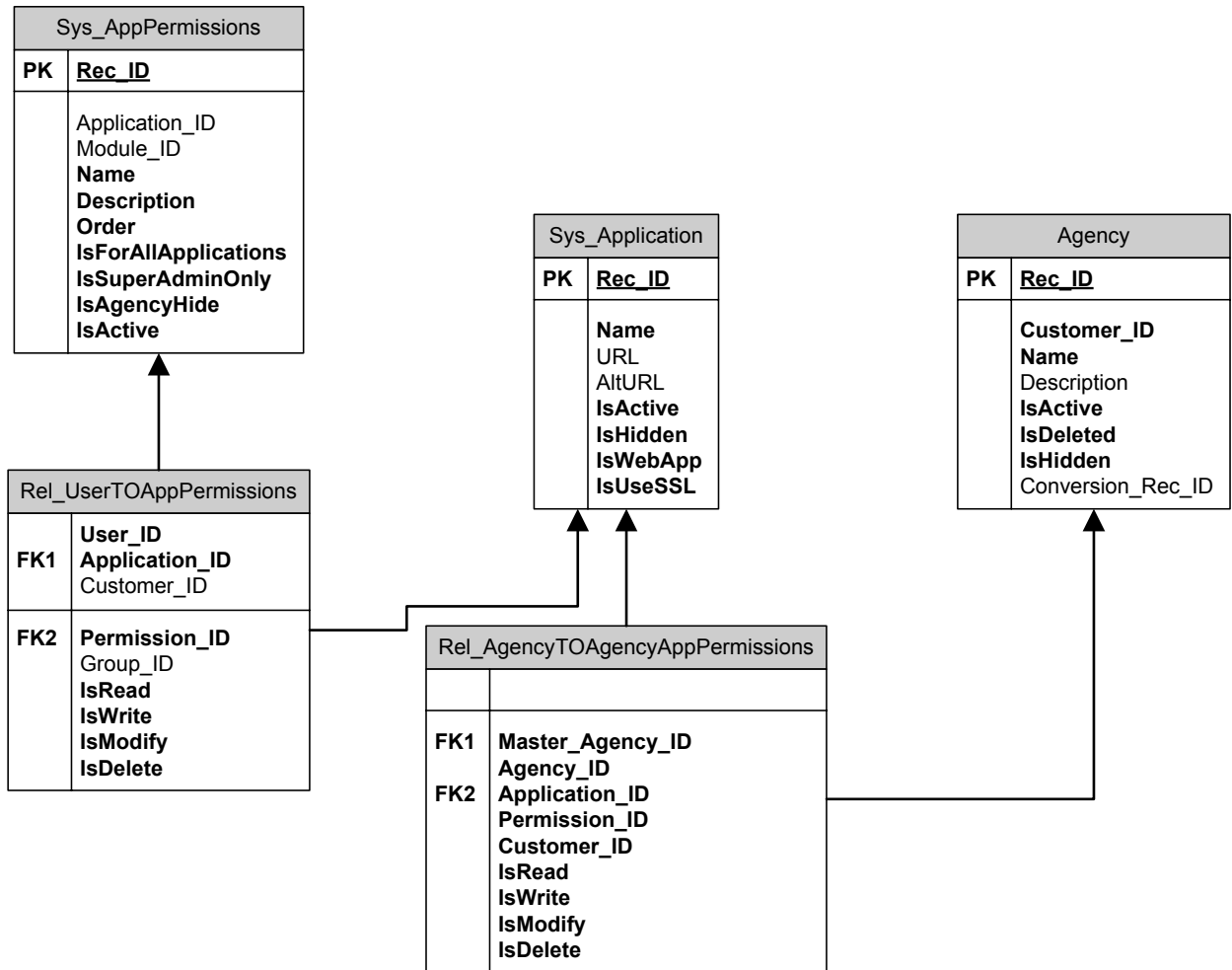
Northpointe uses the following specifications for its hosting environment.

- ❖ 3.6GHz/2MB Cache, Xeon, 800MHz Front Side Bus for PowerEdge 2850
- ❖ 3.6GHz/2MB Cache, Xeon, 800MHz Front Side Bus, 2nd processor for PowerEdge 2850
- ❖ 2GB DDR2 400MHz (4X512MB) Single Ranked DIMMs
- ❖ 73GB, U320, SCSI, 1IN 10K, PE2850
- ❖ Embedded RAID - PERC4 Embedded Integrated
- ❖ 1x6 Hard Drive Backplane PE2850
- ❖ Bezel for PE2850
- ❖ 73GB, U320, SCSI, 1IN 10K, PE2850
- ❖ MR5, ROMB RAID 5, Drives attached to PERC4ei, PE2850
- ❖ Redundant Power Supply With Y-CORD and Straight Cords PE2850
- ❖ 73GB, U320, SCSI, 1IN 10K, PE2850

User and User Security



Agency Security and Application Permissions



Offender Information

